

Seizure with high blood pressure: what's your diagnosis?

Convulsion et hypertension artérielle: quel est votre diagnostic?

**O. Olfa Bouyahia, I. Jhaouet, N. Amdouni, Y. Arfaoui, M. Asidi,
S. Yahyaoui, S. Mrad, S. Boukhtir, A. Sammoud**

Service de Médecine C, Hôpital d'Enfant de Tunis

AB., a 4-years- old child was admitted for post critical coma. Seizures were generalized and tonic-clonic of 45 minutes duration. Glasgow score was 5/15. The patient presented intolerated attacks of fever; blood pressure was 15/10mmHg. Cardiopulmonary auscultation was normal and peripheral pulses were symetrically present. In few hours, he developed a left facial paralysis and an alteration of the left photo motor reflex. Optico-fundoscopic examination showed a papilledema stage II. Cerebrospinal fluid examination, urinary cytobacteriological examination and the chest X ray radiography were normal. Haematological examinations revealed functional renal insufficiency: urea=11.6 mmol/l, creatinine=68 mol/l, a hepatic cytolysis: ASAT=104 UI/L, ALAT=102 UI/L TP=100%, LDH=835 UI/L, CPK=52 UI/L. Complete blood count and CRP were normal.

A Cerebral tomodensitometry was performed (fig 1)

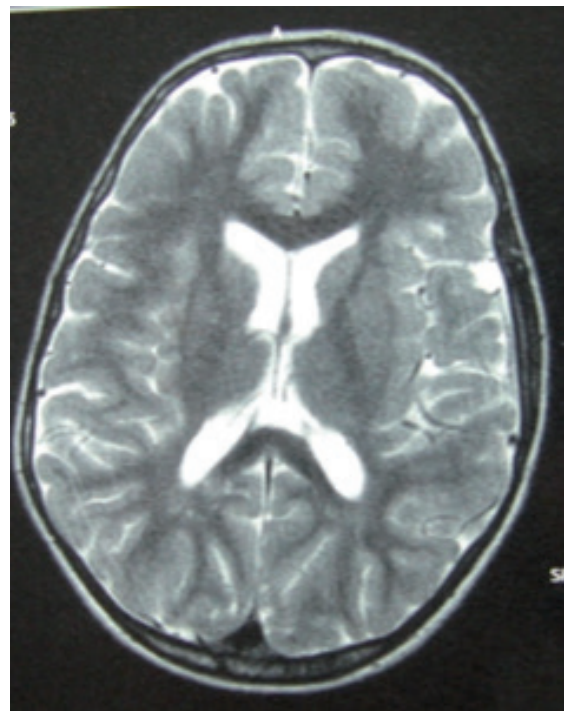


Figure 1 : cerebral TDM

Question: your diagnosis?

Correspondant :

D. Olfa Bouyahia / Hôpital d'Enfants de Tunis Service de Médecine Infantile C Bab Saadoun. 1007 Jebbari, Tunisie. / E-mail: olfa.bouyahia@rns.tn.